

# User Guide

## Firmware- & BLE-Update for HCT torque devices

-

**GARANT torque wrench HCT 655010**  
**HOLEX torque wrench HCT 655025**  
**GARANT torque tester HCT 654410**  
**GARANT torque screwdriver HCT 659021 & 659031**

### Index

<b>1</b>	<b>Introduction</b> .....	<b>3</b>
<b>2</b>	<b>Equipment</b> .....	<b>3</b>
2.1	HCT torque device.....	3
2.2	Computer (for Firmware- & BLE- update via WrenchConfig).....	3
2.3	Mobile Device.....	3
<b>3</b>	<b>Software Installation</b> .....	<b>4</b>
3.1	WrenchConfig PC-Software.....	4
3.2	Hoffmann Connected Tools HCT App .....	4
<b>4</b>	<b>Torque wrenches</b> .....	<b>5</b>
4.1	Garant DTW- 655010 .....	5
4.1.1	Firmware Update via WrenchConfig.....	5
4.1.2	Bluetooth Module Update via WrenchConfig & mobile device (Android).....	10
4.1.3	Bluetooth Module Update via WrenchConfig & mobile device (iOS).....	15
4.2	Horex TW- 655025.....	21
4.2.1	Firmware Update via WrenchConfig.....	21
4.2.2	Bluetooth Module Update via Hoffmann CT App.....	26
<b>5</b>	<b>Garant Torque Tester 654410 and Torque Screwdriver 659021 &amp; 659031</b> .....	<b>29</b>
5.1	Firmware Update via the Hoffmann CT app .....	29
5.2	Bluetooth Module Update via the Hoffmann CT app.....	33
<b>6</b>	<b>Expert mode - in case of failed updates</b> .....	<b>37</b>
6.1	Firmware Update .....	37

**Contact & Support:**

E-Mail: [hct@hoffmann-group.com](mailto:hct@hoffmann-group.com)

## 1 Introduction

The document presents a brief explanation of how to update the Application-Firmware and the Bluetooth-Firmware of HCT torque devices. The table below gives you an overview of the different devices and which method you can use to update them.

HCT-Gerät	Firmware Update	BLE-Update
Garant DTW (chapter 4.1)	WrenchConfig	WrenchConfig + Mobile App
Holex TW (chapter 4.2)	WrenchConfig	Mobile App OR WrenchConfig
Garant TS (chapter 5)	Mobile App OR WrenchConfig	Mobile App OR WrenchConfig
Garant TT (chapter 5)	Mobile App OR WrenchConfig	Mobile App OR WrenchConfig

## 2 Equipment

### 2.1 HCT torque device

<b>Device Description</b>	HCT torque devices (torque wrench, torque screwdriver or torque tester) have a USB-C interface for connection to the computer.
---------------------------	--

### 2.2 Computer (for Firmware- & BLE- update via WrenchConfig)

<b>Model</b>	Any
<b>Operating System</b>	Windows 10 or above

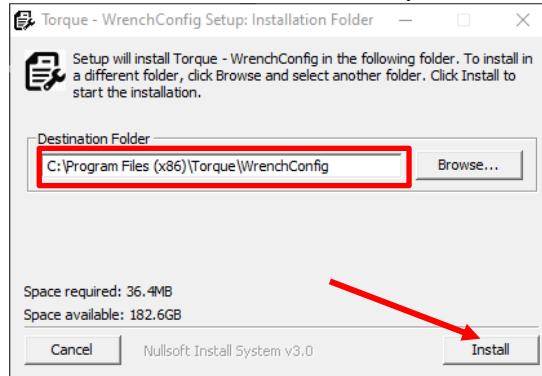
### 2.3 Mobile Device

<b>Model</b>	Any
<b>Operating System</b>	Android or iOS
<b>Software</b>	Hoffmann Connected Tools HCT App

### 3 Software Installation

#### 3.1 WrenchConfig PC-Software

- **Install** the WrenchConfig software by clicking on the executable file.
- **Click on *Install*** and remember the location where you install the program.



#### 3.2 Hoffmann Connected Tools HCT App

- To install this application, go to Google Play Store or App Store for iOS and search for "**Hoffmann Connected Tools HCT**" (hereafter abbreviated as Hoffmann CT App) and click on "Install".



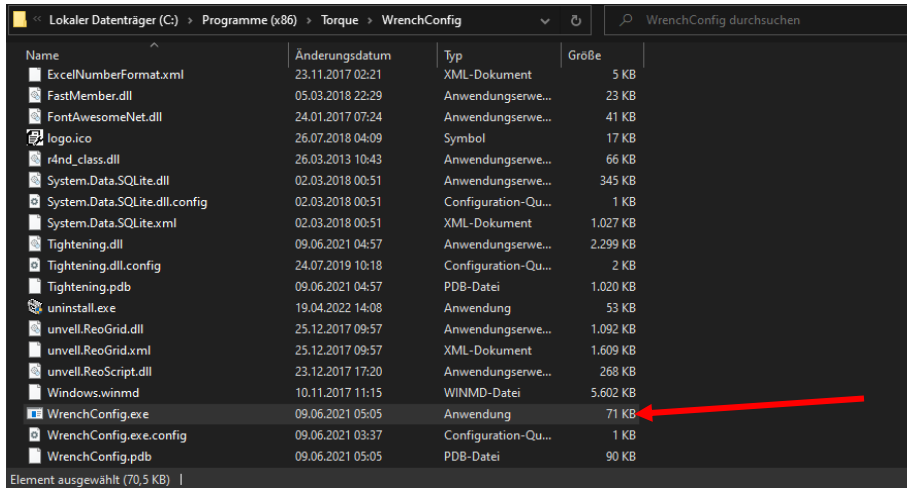
"Hoffmann CT App" Icon

## 4 Torque wrenches

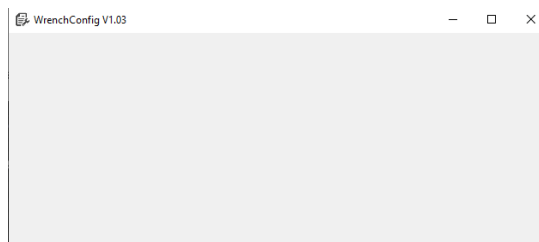
### 4.1 Garant DTW- 655010

#### 4.1.1 Firmware Update via WrenchConfig

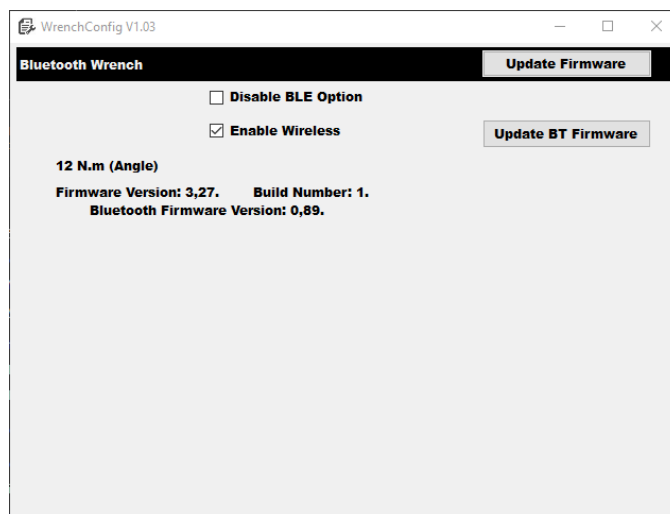
- Open the program “WrenchConfig.exe” from the installation folder.



- WrenchConfig window is shown empty.

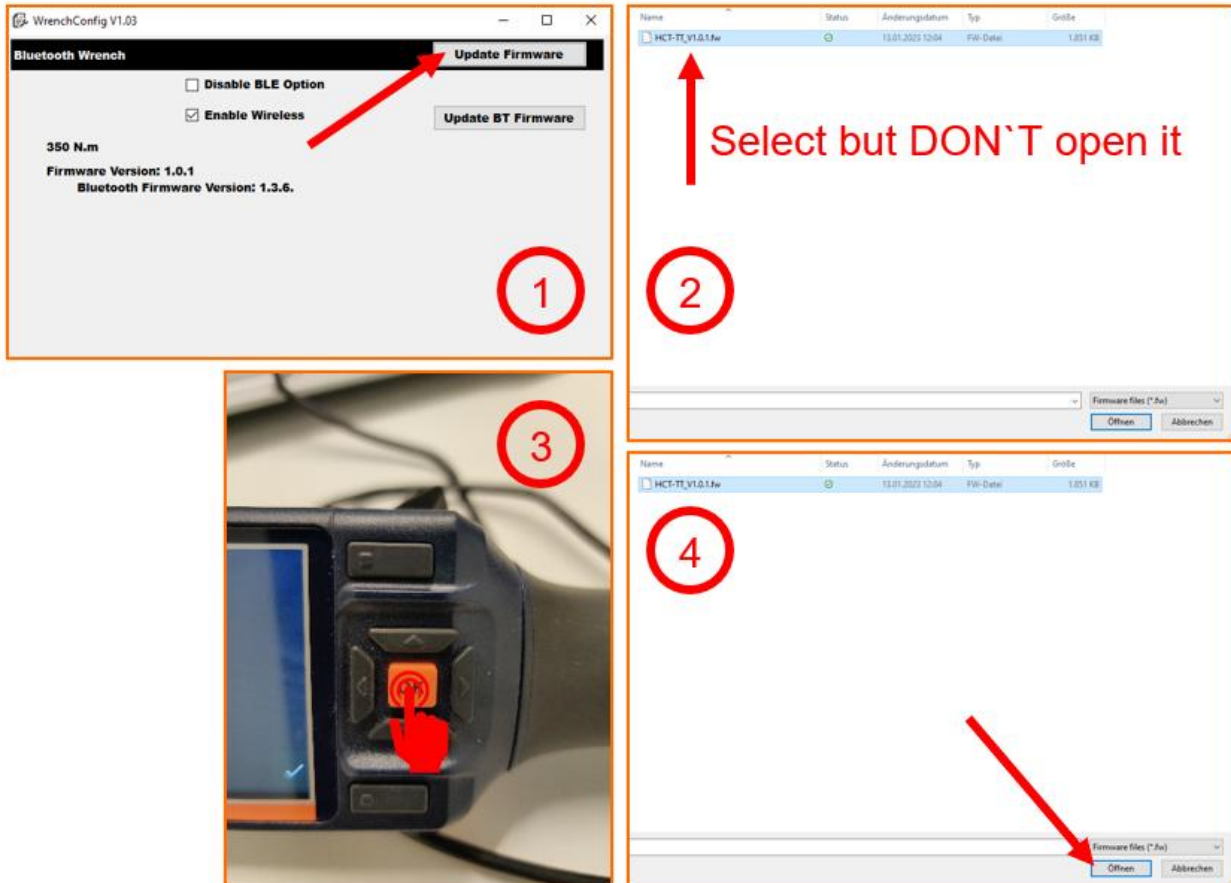


- Connect the torque device to the computer through a USB cable and **switch the torque device ON**. The window of the program should change from blank to the following:

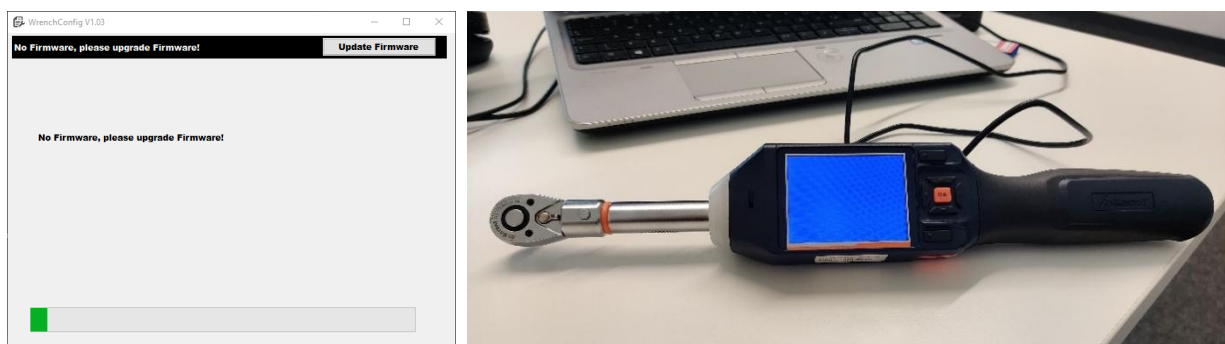


**Note: First read the next 4 steps carefully before carrying them out.**

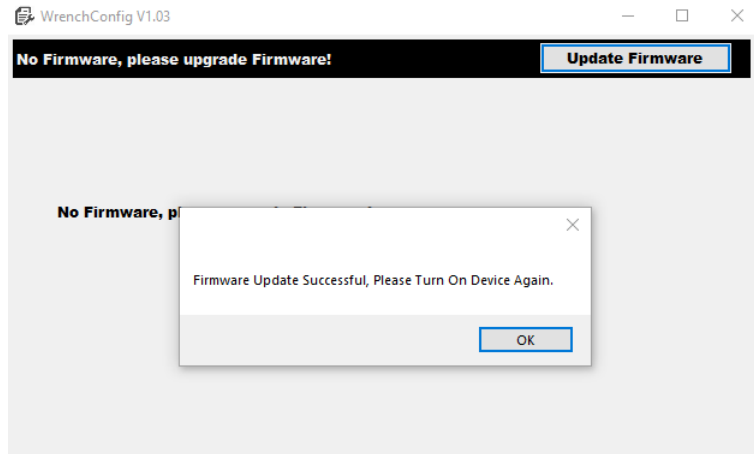
1. Click on *Update Firmware*.
2. **Select** your firmware .fw file (e.g. GarantVXXX .fw) but **DON'T** double click it or open it.
3. Before opening the file, you should **press and hold** the **OK button** on the torque device as if trying to shut it down.
4. During this moment **open** the .fw file **before** the torque device switches off.
5. **Keep pressing** the OK button until the loading bar starts to move.



- If successfully done, the firmware update should be executed. The display of the torque device should show “glitches” and then turn to blue. The *WrenchConfig* program should show the progress of the update.



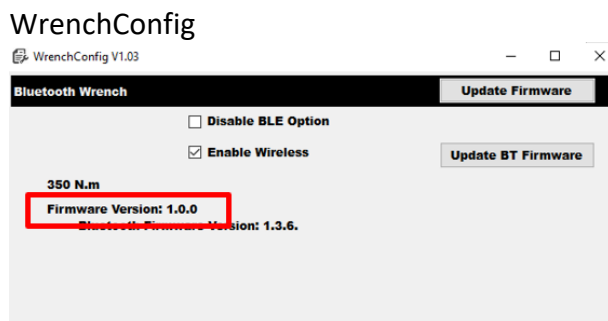
- Click **OK** after the update has been successfully completed.



- Switch **ON** the torque device again.



- To review the installed Firmware version, check the firmware version shown in WrenchConfig or open the device menu and select "Info".

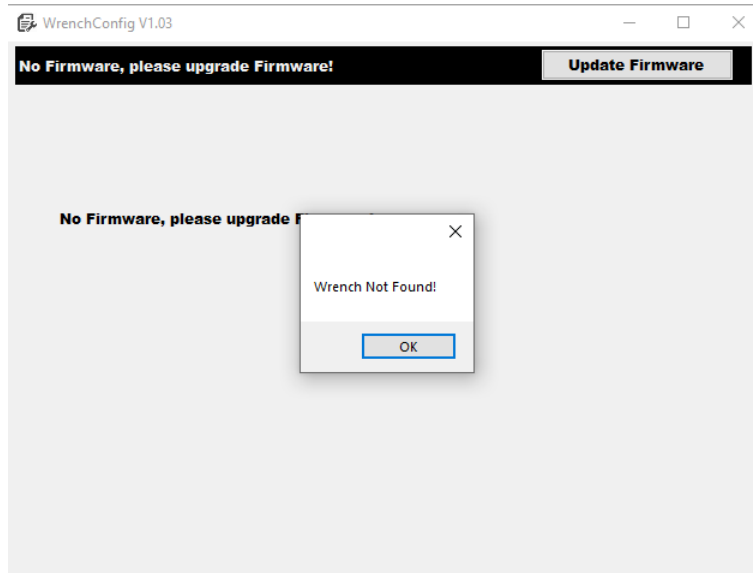


"Info" menu on torque device

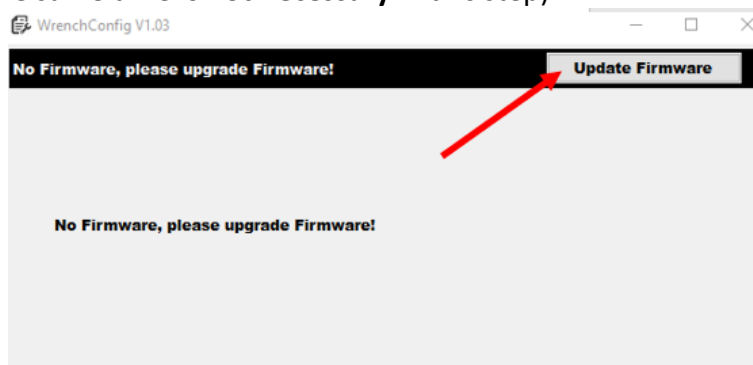


***Skip the next steps if the firmware update was successful.***

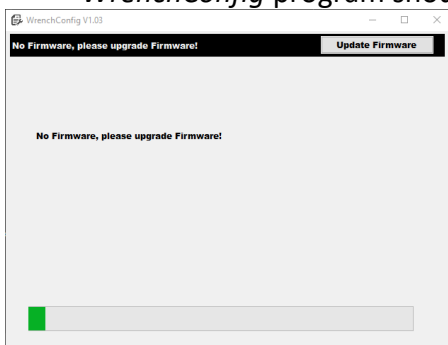
- If the **update failed**, the WrenchConfig screen is shown empty or showing the following error message.



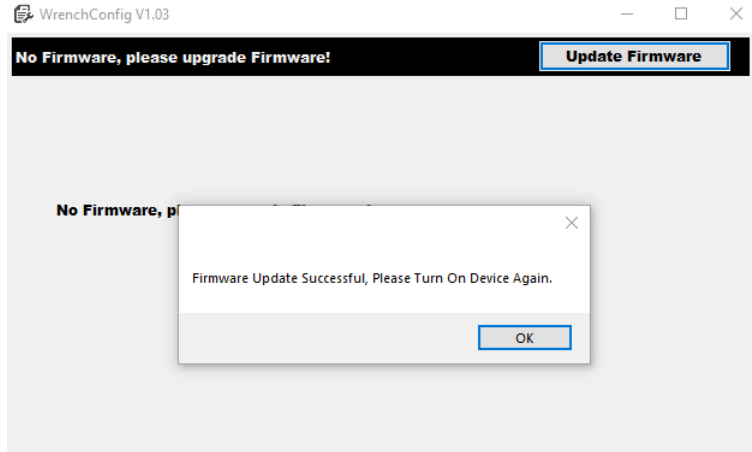
- In this case, please **restart** WrenchConfig and **click** on *Update Firmware* (pressing the OK Button at the same time **is not necessary** in this step).



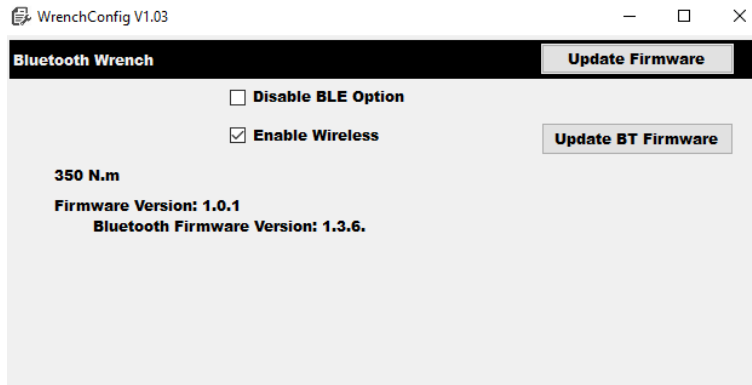
- If successfully done, the firmware update should be executing. The display of the torque device should show “glitches” and then turn to blue. The *WrenchConfig* program should show the progress bar of the update.



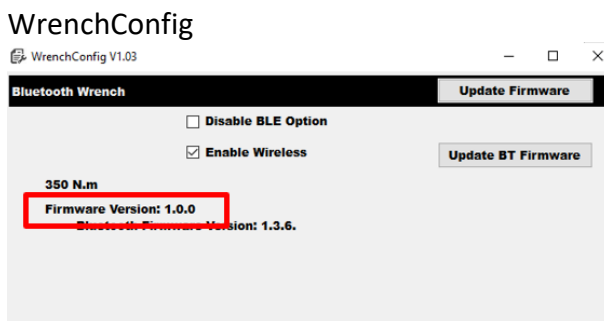
- Click **OK** after the update has been successfully completed.



- Switch **ON** the torque device again.



- To verify the installed Firmware version, check the firmware version shown in WrenchConfig or open the menu of the torque device and select "Info".



"Info" menu on torque device



#### 4.1.2 Bluetooth Module Update via WrenchConfig & mobile device (Android)

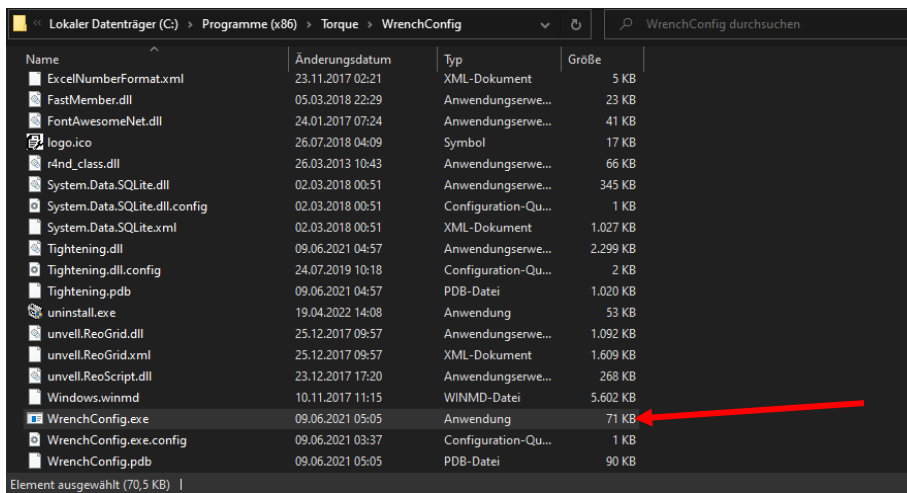
**Note:**

- If the Bluetooth connection or the update process is interrupted during the following steps, please restart the torque device and the Hoffmann CT app and repeat the procedure.
- Only possible to update one device at a time.

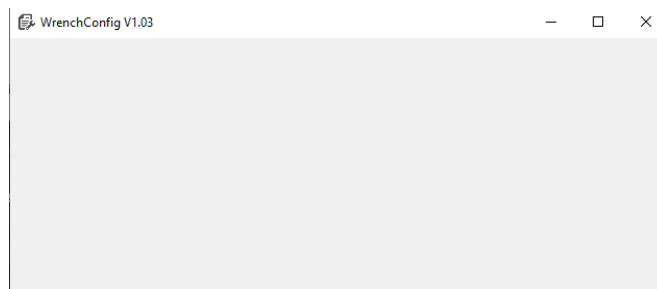
**Preconditions:**

- Bluetooth on torque device = ON.
- Bluetooth on mobile device = ON.
- WrenchConfig* is installed on computer.
- Hoffmann CT app* is installed on mobile device.

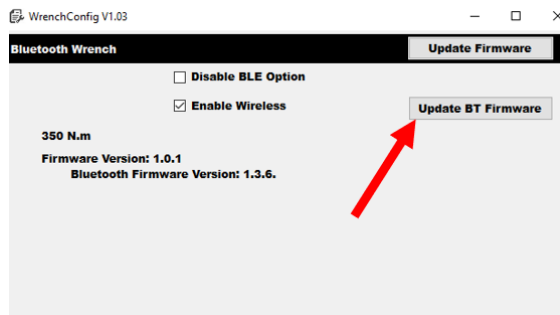
- **Open** the program “WrenchConfig.exe” from the installation folder.



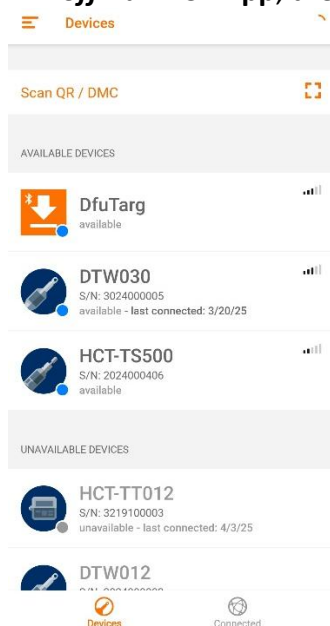
- WrenchConfig window is shown empty.



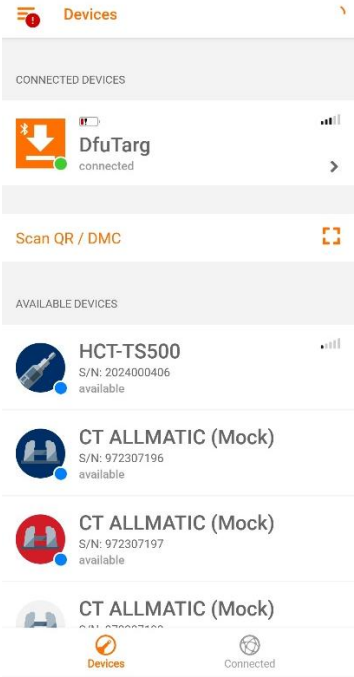
- **Connect** the torque device to the computer through a USB cable and **switch the torque device ON**. The window of the WrenchConfig should now show the torque device infos.
- **Open the Hoffmann CT App** with Bluetooth enabled on your mobile device.
- **Click Update BT Firmware** in WrenchConfig.



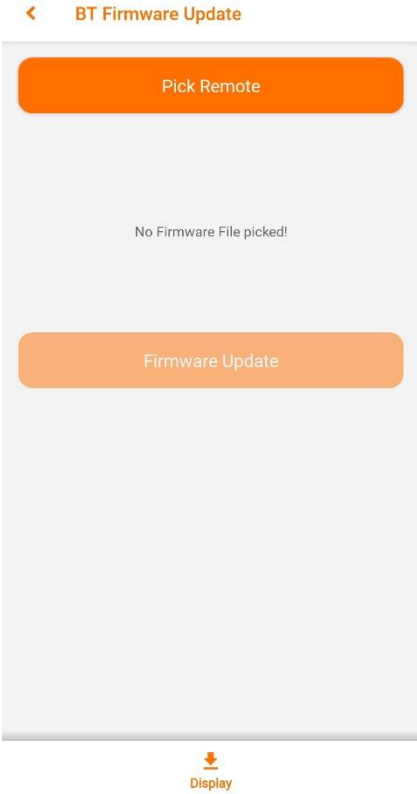
- **Refresh** the screen of Hoffmann CT App by **swiping downwards**.
- **In Hoffmann CT App**, the torque device should now be displayed as **DfuTarg**.

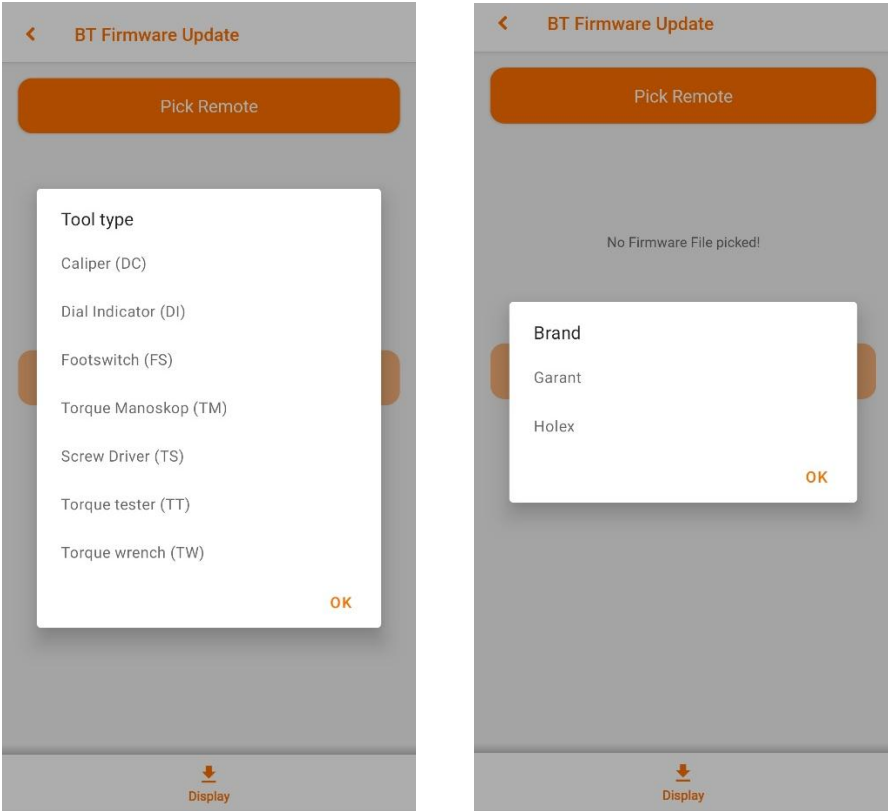


- **Click on DfuTarg.**  
**Info:** If *DfuTarg* is not displayed, please **refresh the screen by swiping downwards**. Repeat refreshing until *DfuTarg* is shown. If *DfuTarg* is still not shown, please click again on *Update BT Firmware* and refresh again.  
*Preferably act quickly (on the first 30 seconds after device was set to DFU Mode) to avoid any problems.*

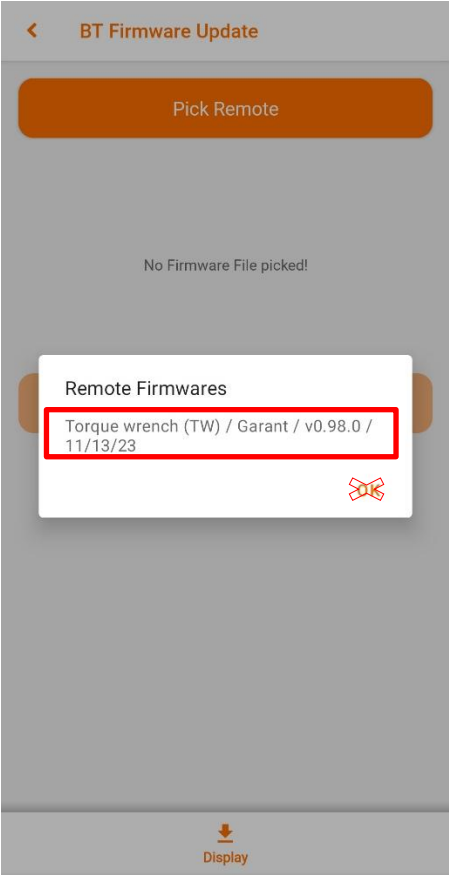


- Then **click on DfuTarg** again to open the menu. **Click on Pick Remote** and select the correct **tool type** and **brand** (here: Torque wrench (TW); Garant)

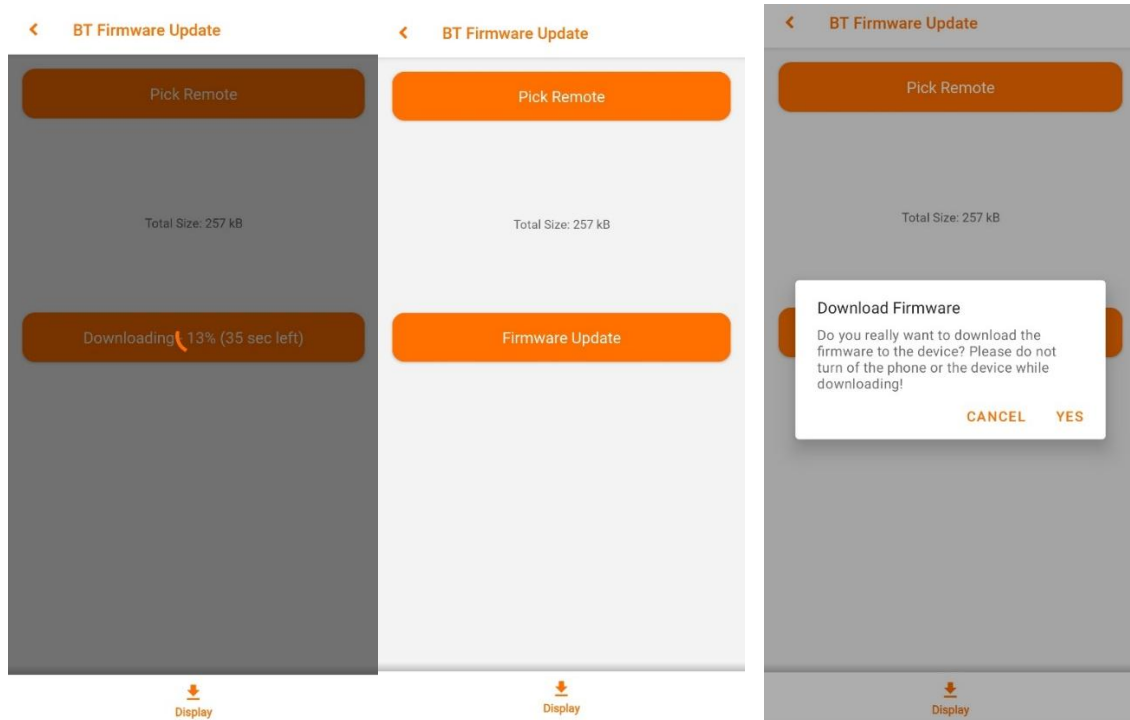




- The firmware versions available for download are then displayed. Don't **click on OK** but on the **firmware version** you want to flash.

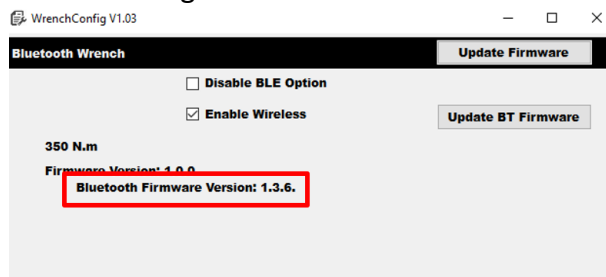


- The firmware is then downloaded. Once the download is complete, **click on *Firmware Update*** and **confirm** that you want to update the device with the firmware. The firmware will now be transferred. **Wait** for the update to be completed and **DON'T** close the application or turn off any devices in use.



- **Restart** your device after the download is complete.
- To verify the installed BLE version, check the BLE version shown in WrenchConfig or open the menu of the torque device and select "Info".

### WrenchConfig



### "Info" menu on torque device



### 4.1.3 Bluetooth Module Update via WrenchConfig & mobile device (iOS)

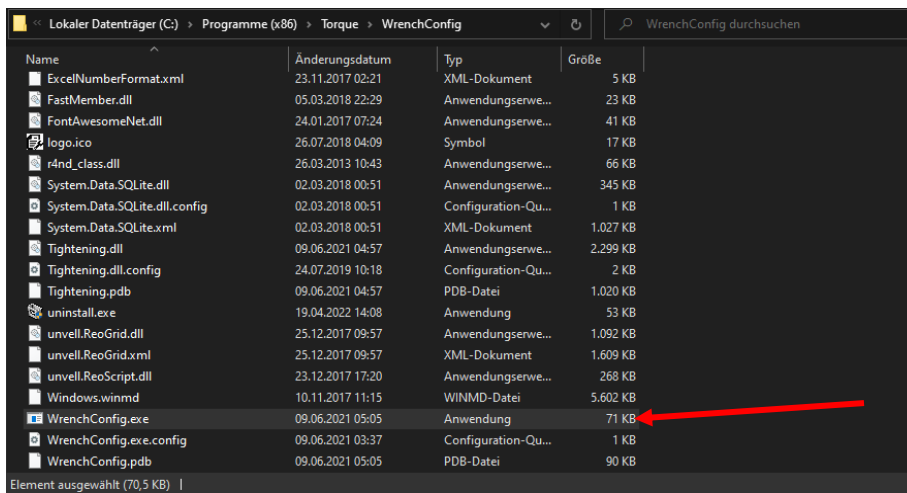
**Note:**

- If the Bluetooth connection or the update process is interrupted during the following steps, please restart the torque device and the Hoffmann CT app and repeat the procedure.
- Only possible to update one device at a time.

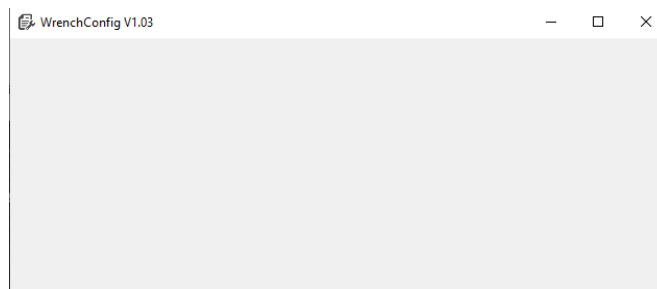
**Preconditions:**

- Bluetooth on torque device = ON.
- Bluetooth on mobile device = ON.
- WrenchConfig installed on computer.
- Hoffmann CT app is installed on mobile device.

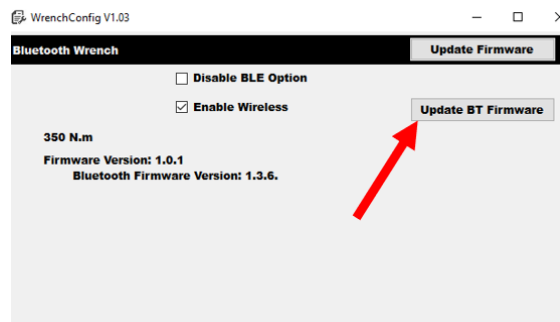
- Open the program “WrenchConfig.exe” from the installation folder.



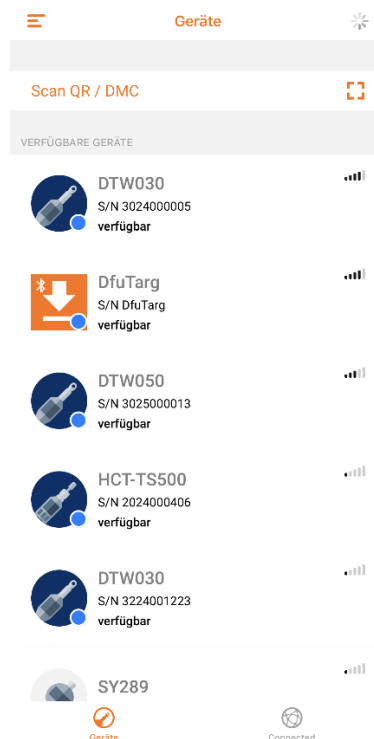
- WrenchConfig window is shown empty.



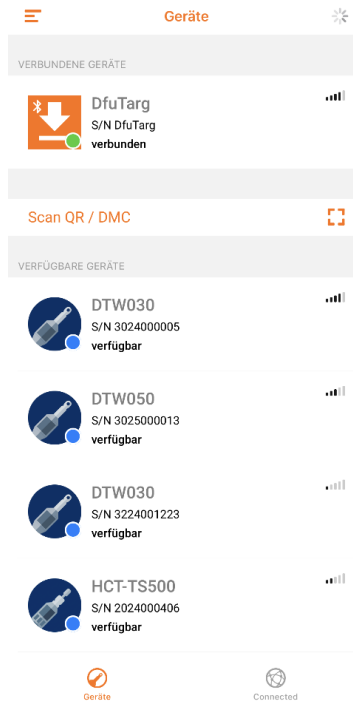
- **Connect** the torque device to the computer through a USB cable and **switch the torque device ON**. The window of the WrenchConfig should now show the torque device infos.
- **Open the *Hoffmann CT App*** with Bluetooth enabled on your mobile device.
- **Click *Update BT Firmware*** in WrenchConfig.



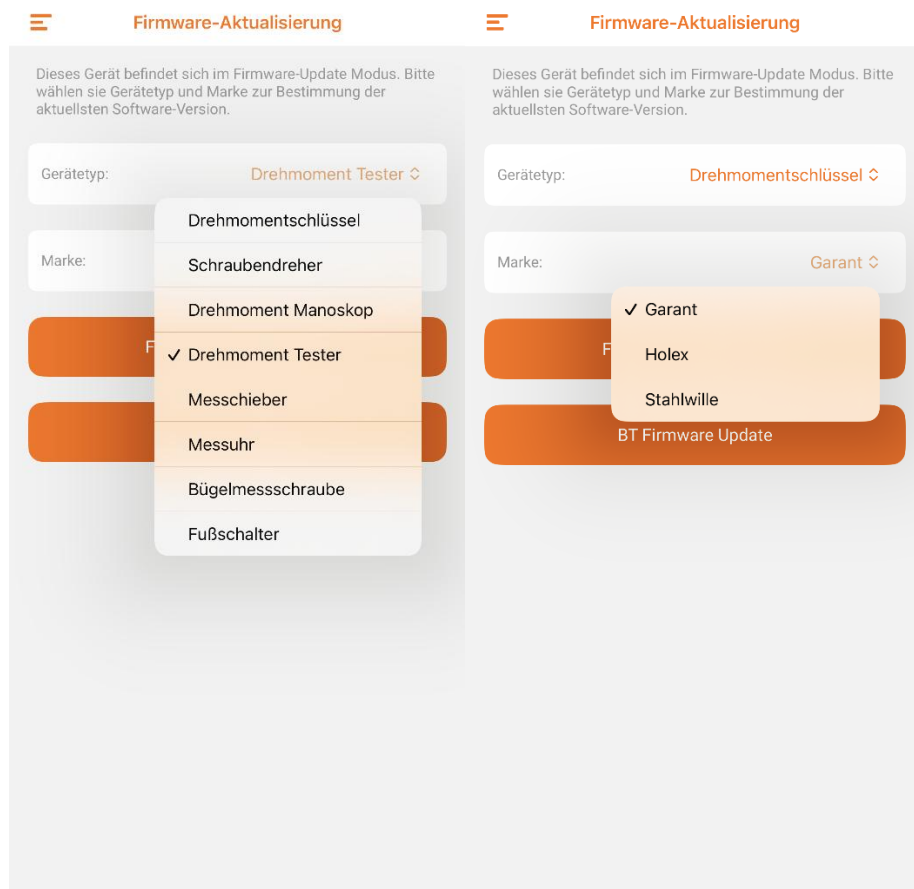
- **Refresh** the screen of the *Hoffmann CT App* by **swiping downwards**.
- **In *Hoffmann CT App***, the torque device should now be displayed as *DfuTarg*.



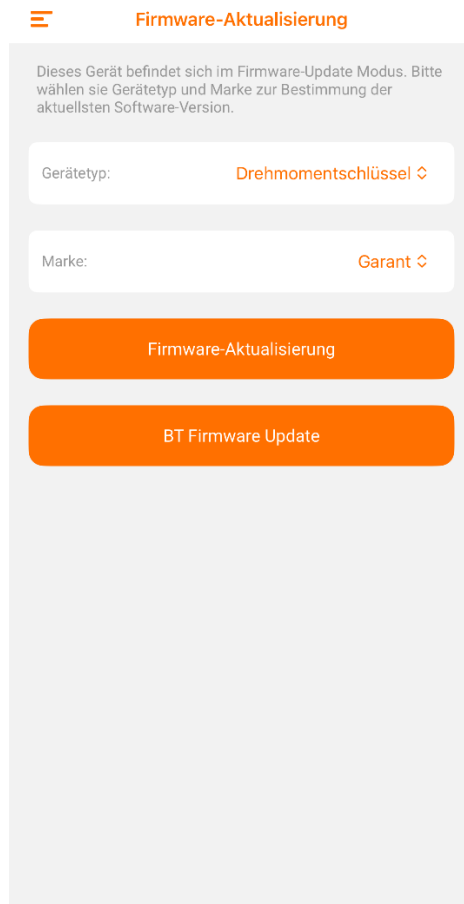
- **Click on *DfuTarg*** to connect to the device.  
**Info:** If *DfuTarg* is not displayed, please **refresh the screen by swiping downwards**. Repeat refreshing until *DfuTarg* is shown. If *DfuTarg* is still not shown, please click again on *Update BT Firmware* and refresh again.  
*Preferably act quickly (on the first 30 seconds after device was set to DFU Mode) to avoid any problems.*



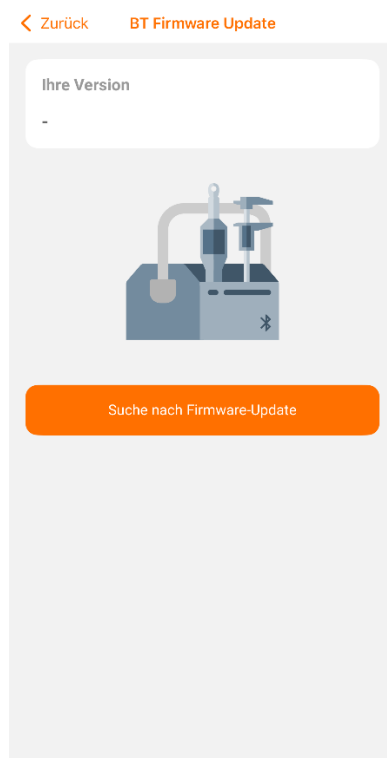
- After DfuTarg is displayed as **connected**, click on **DfuTarg** again.
- Select the correct **device type** (torque wrench) and the correct **brand** (Garant) from the list.



- Then **click on *BT Firmware Update***.



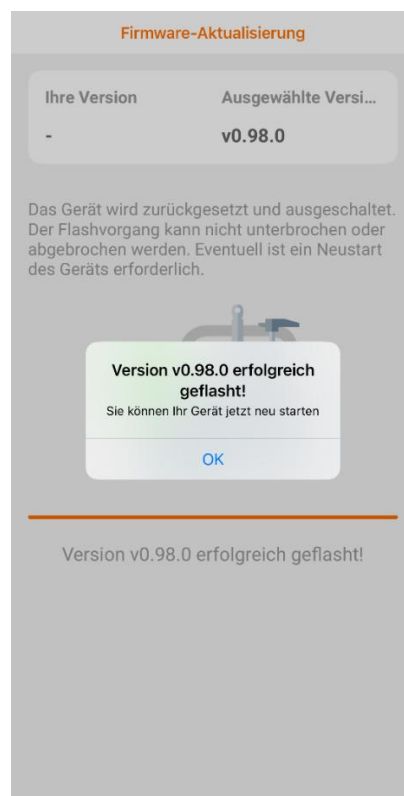
- Then **click on *Search for firmware update*** and then ***Download latest version***.



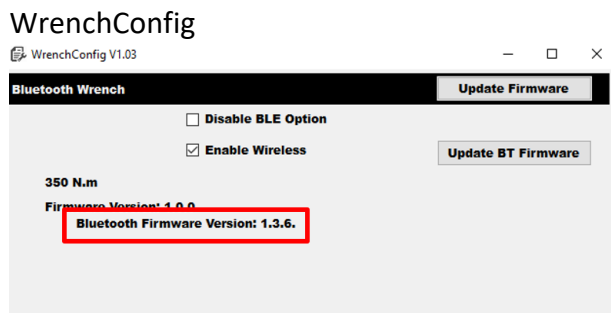
- After the firmware version has been successfully downloaded, click on **Start flash process**.



- The flash process may take some time. Please **do not interrupt** this process.



- **Restart** your torque wrench after the flash process has been completed.
- To verify the installed BLE version, check the BLE version shown in WrenchConfig or open the menu of the torque device and select “Info”.



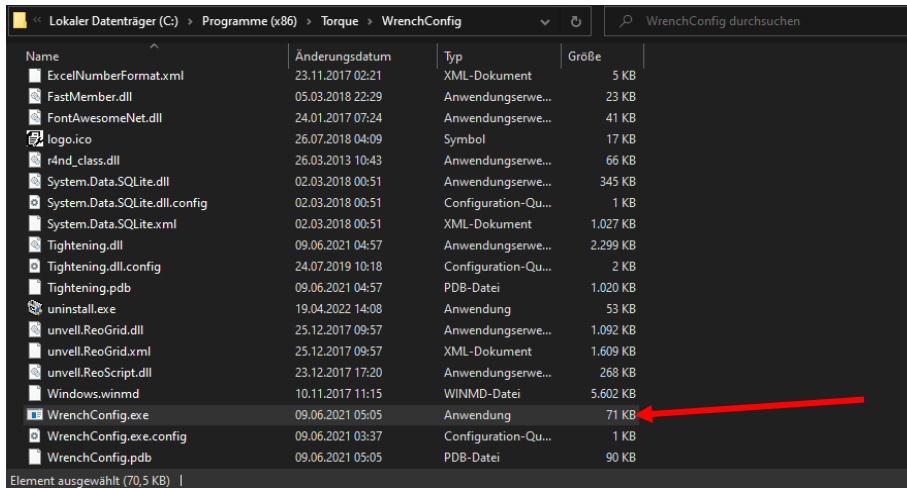
“Info” menu on torque device



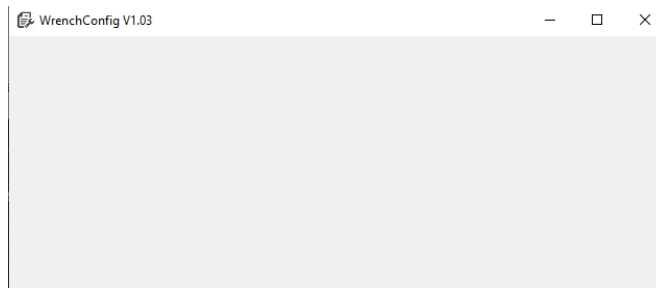
## 4.2 Halex TW- 655025

### 4.2.1 Firmware Update via WrenchConfig

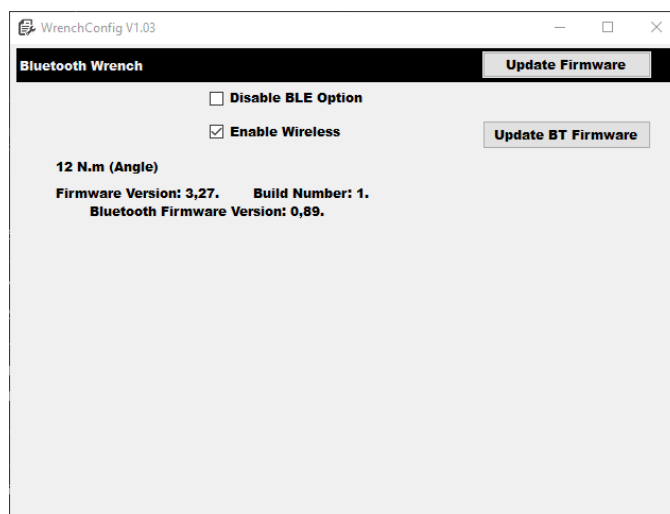
- Open the program “WrenchConfig.exe” from the installation folder.



- WrenchConfig window is shown empty.

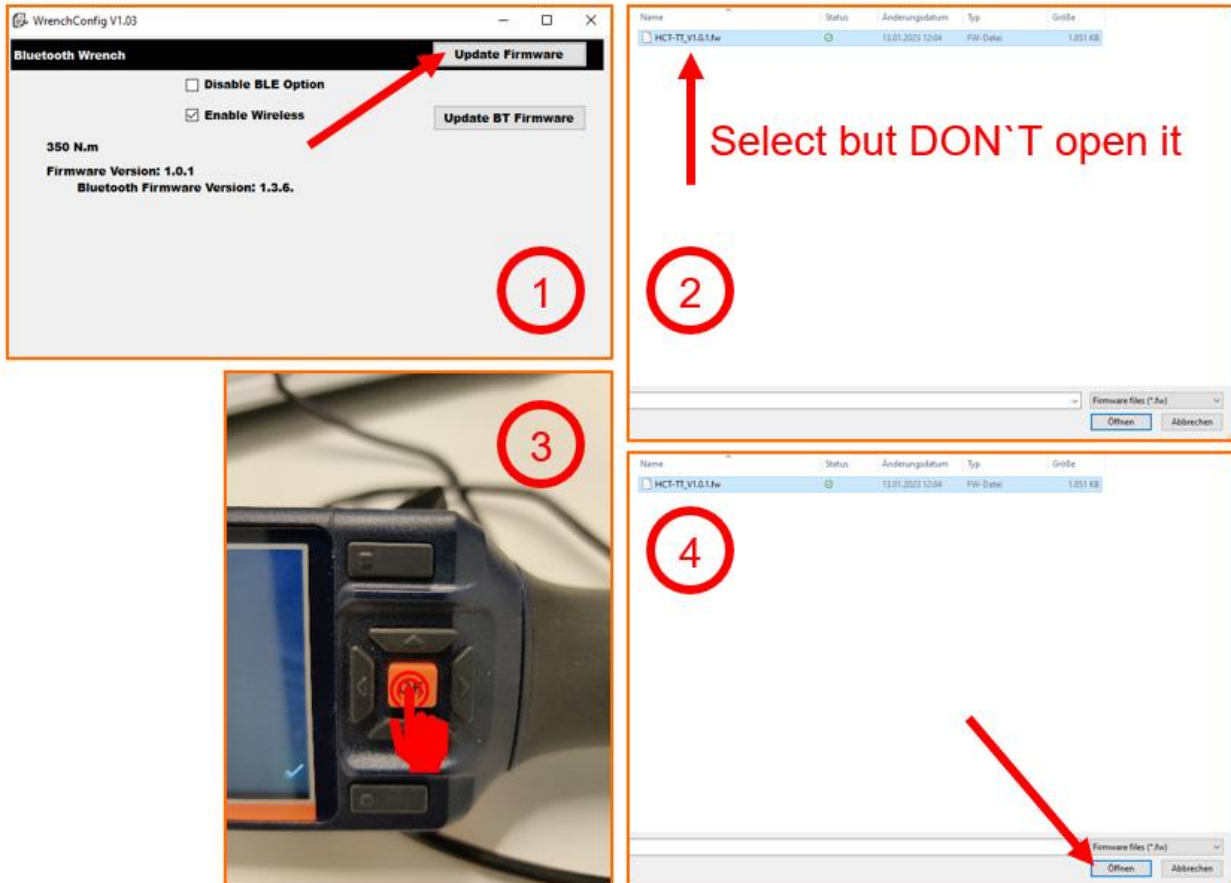


- **Connect** the torque device to the computer through a USB cable and **switch the torque device ON**. The window of the program should change from blank to the following:

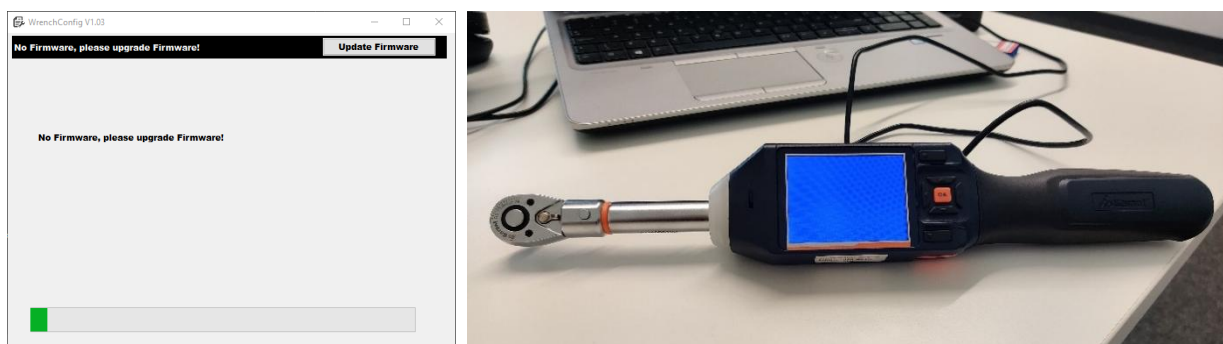


**Note: First read the next 4 steps carefully before carrying them out.**

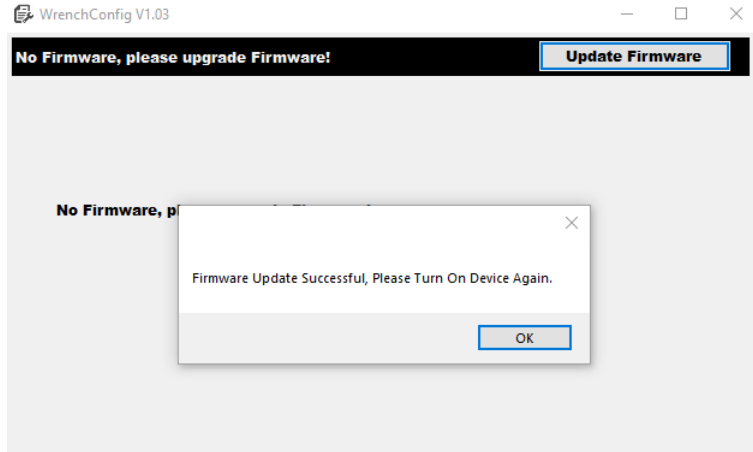
1. Click on *Update Firmware*.
2. **Select** your firmware .fw file (e.g. GarantVXXX .fw) but **DON'T** double click it or open it.
3. Before opening the file, you should **press and hold** the **OK button** on the torque device as if trying to shut it down.
4. during this moment **open** the .fw file **before** the torque device switches off.
5. **Keep pressing** the OK button, until the loading bar starts to move.



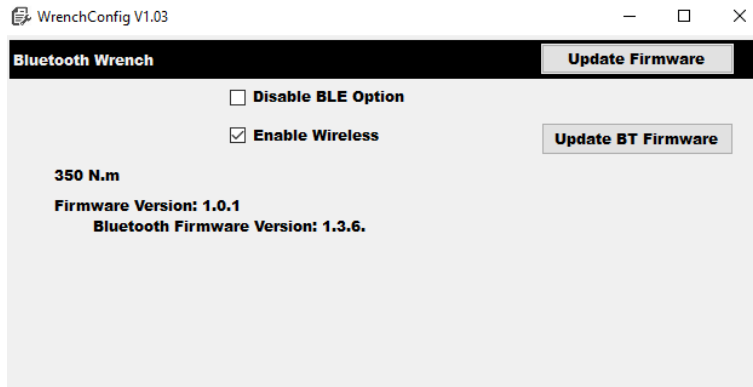
- If successfully done, the firmware update should be executing. The display of the torque device should show “glitches” and then turn to blue. The *WrenchConfig* program should show the progress of the update.



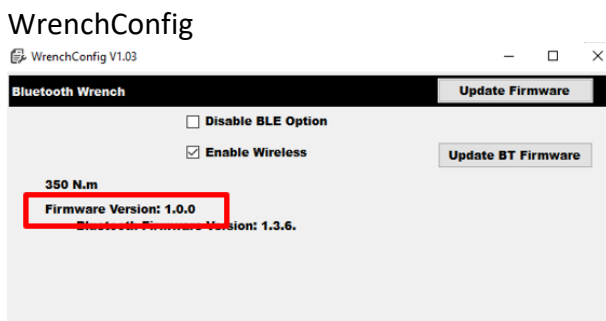
- Click **OK** after the update has been successfully completed.



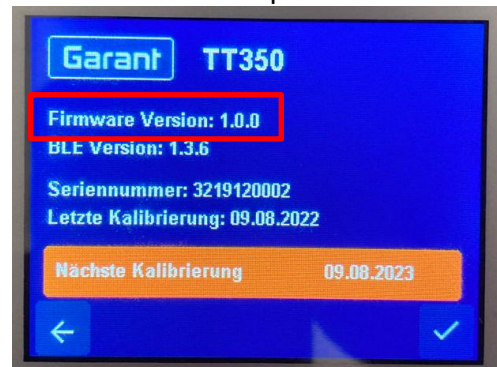
- Switch **ON** the torque device again.



- To review the installed Firmware version, check the firmware version shown in WrenchConfig or open the device menu and select "Info".

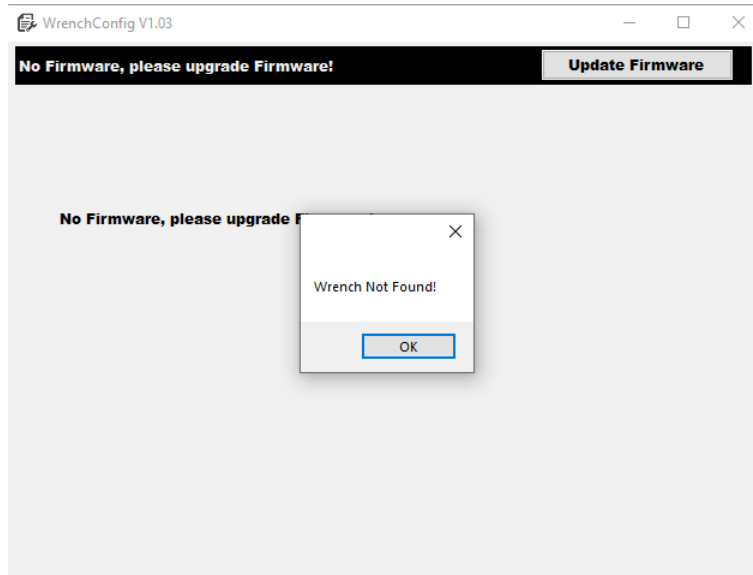


"Info" menu on torque device

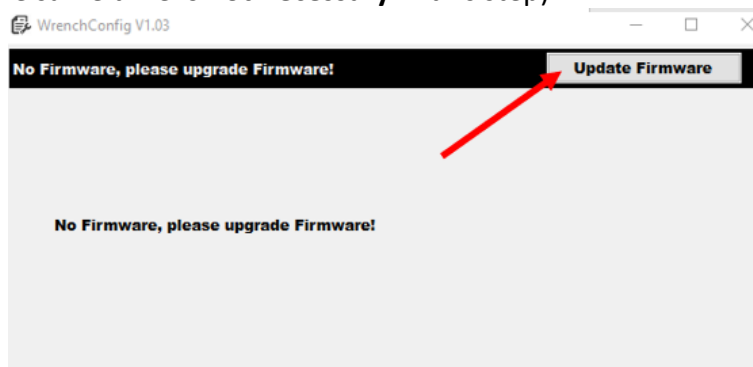


***Skip the next steps if the firmware update was successful.***

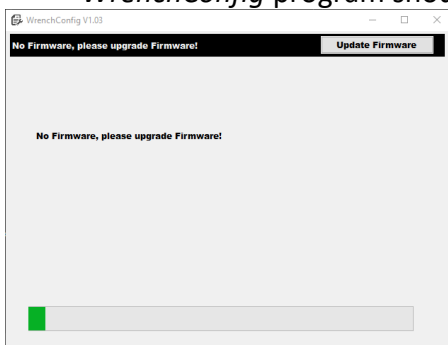
- If the **update failed**, the WrenchConfig screen is shown empty or showing the following error message.



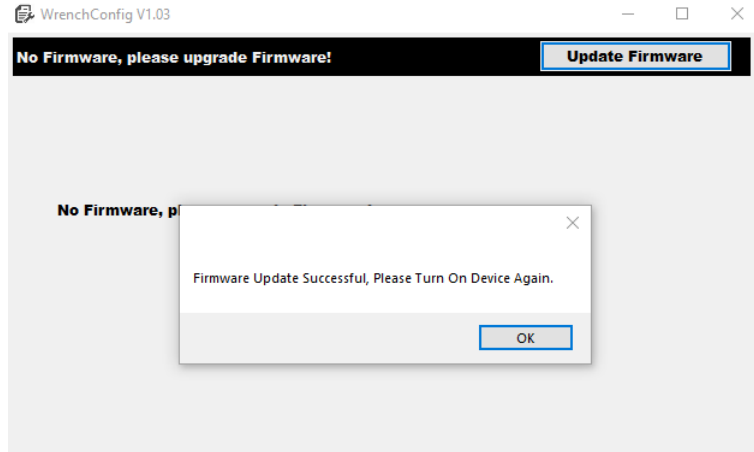
- In this case, please **restart** WrenchConfig and **click** on *Update Firmware* (pressing the OK Button at the same time **is not necessary** in this step).



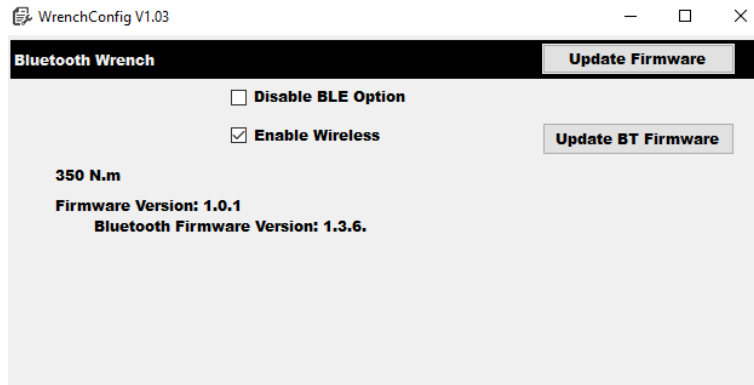
- If successfully done, the firmware update should be executing. The display of the torque device should show "glitches" and then turn to blue. The *WrenchConfig* program should show the progress bar of the update.



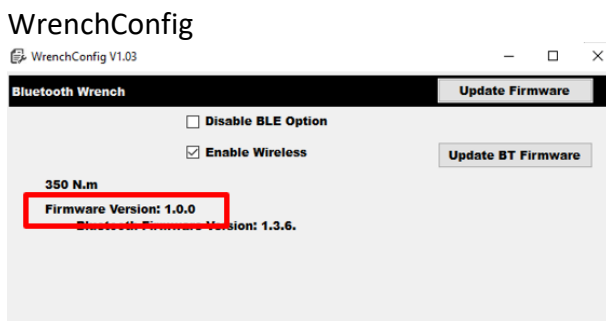
- Click **OK** after the update has been successfully completed.



- Switch **ON** the torque device again.



- To verify the installed Firmware version, check the firmware version shown in WrenchConfig or open the menu of the torque device and select "Info".



"Info" menu on torque device



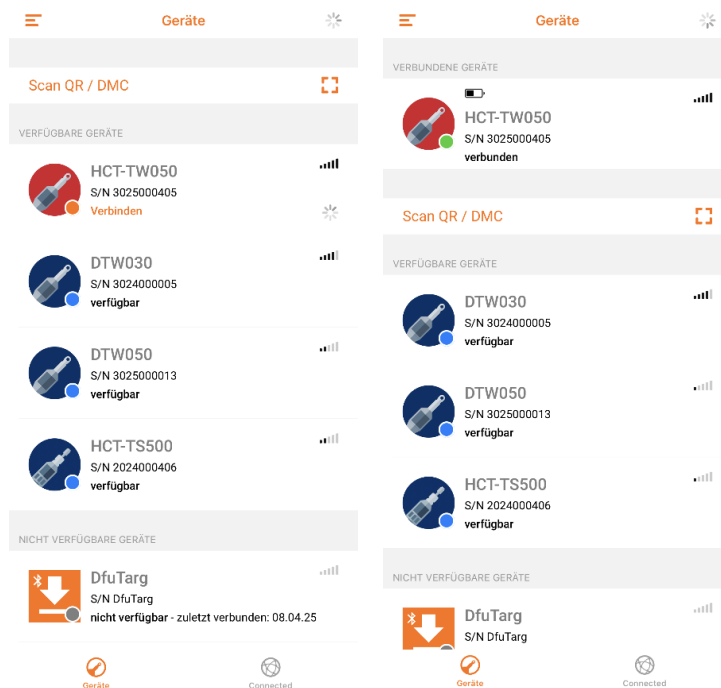
## 4.2.2 Bluetooth Module Update via Hoffmann CT App

**Note:** If the Bluetooth connection or the update process is interrupted during the following steps, restart the TW and the Hoffmann CT app and repeat the process. If the TW can no longer be found, go to Chapter 6: Expert mode.

### Preconditions:

Hoffmann CT App Version 3.5.0 or higher is installed.

- **Connect** your device to the Hoffmann CT app by selecting it from the list of available devices. Please note that your device must be in **Bluetooth mode “App”** in order to be discoverable for the app.



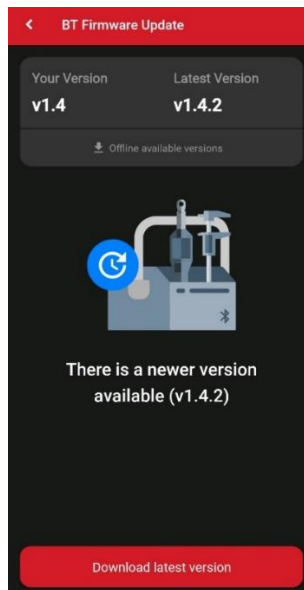
- Then go to the **settings** of your device in the mobile app. At the bottom you will find **Firmware Update**.



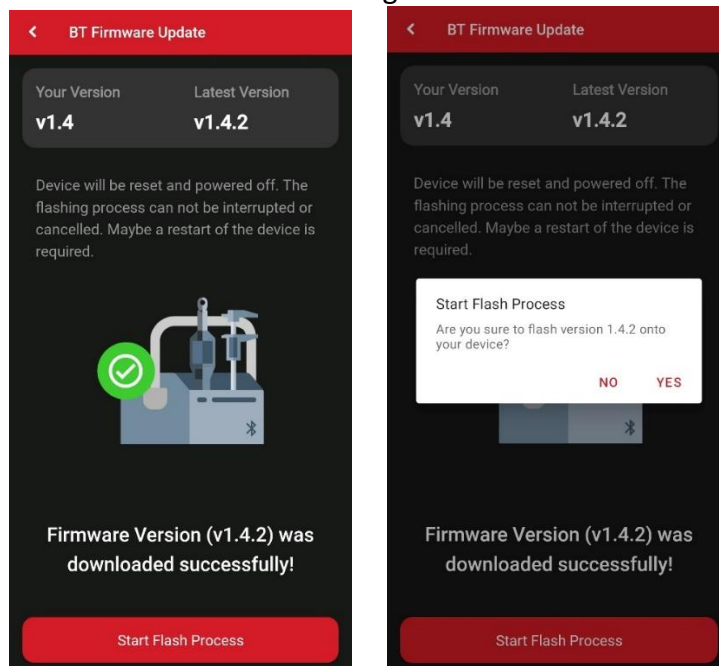
- Then **click on *Update*** under BLUETOOTH FIRMWARE.



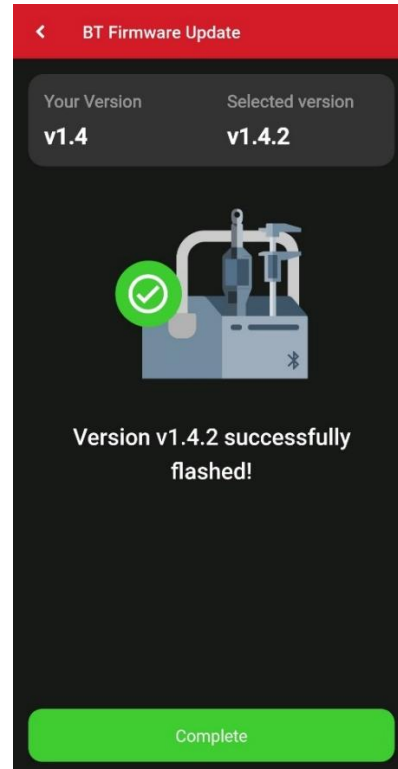
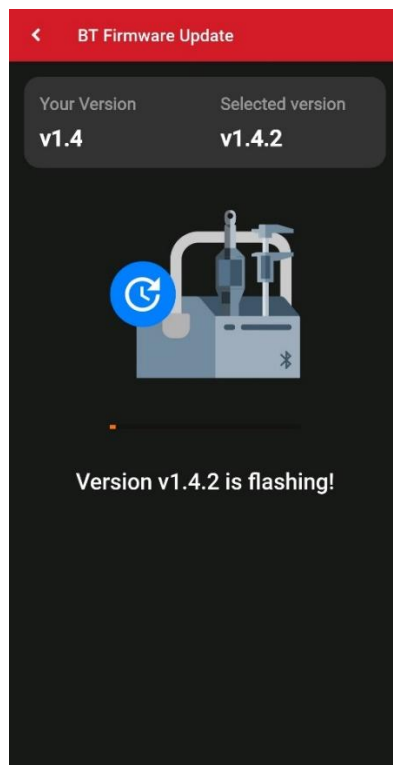
- You will now be shown whether a newer version is available. If this is the case, **click on *Download latest version*** to download it.



- Once the download is complete, **click on *Start Flash Process*** to load the firmware onto the device and **confirm** this again.



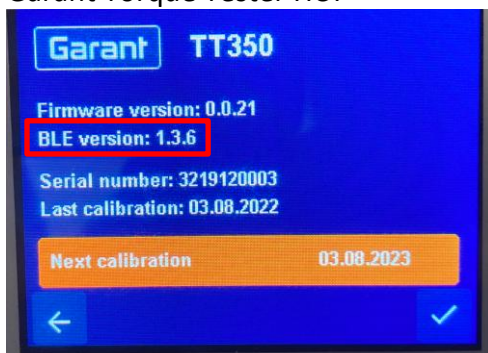
- The Flash process is now started. Once this has been successfully completed, **click *Complete*** to end the update process.



- Then restart the torque wrench.
- To check the installed Bluetooth firmware version, open the menu ☰“Info” on the torque wrench or establish a connection with the Hoffmann CT app and select the “Settings” tab.

Info menu -

Garant Torque Tester HCT



Setting tab –

HCT mobile App



## 5 Garant Torque Tester 654410 and Torque Screwdriver 659021 & 659031

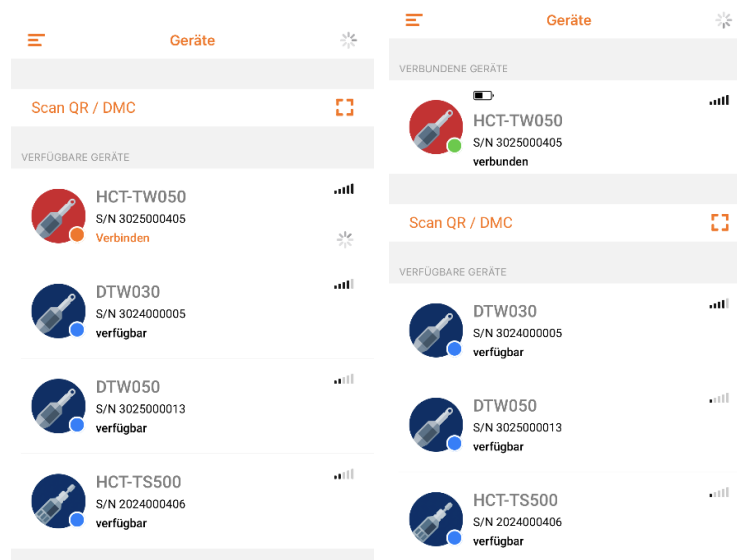
### 5.1 Firmware Update via the Hoffmann CT app

**Note:** If the Bluetooth connection or the update process is interrupted during the following steps, restart the TW and the Hoffmann CT app and repeat the process. If the TW can no longer be found, go to Chapter 6: Expert mode.

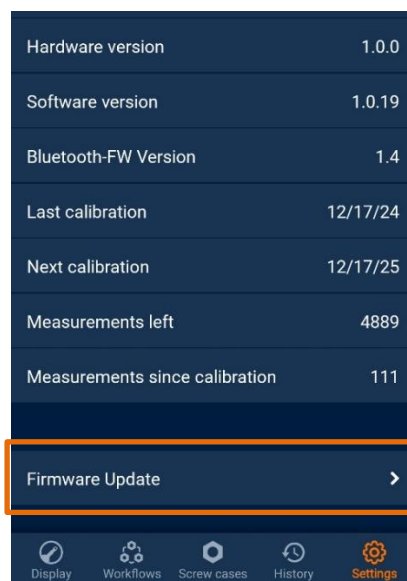
#### Preconditions:

Hoffmann CT App Version 3.5.0 or higher is installed.

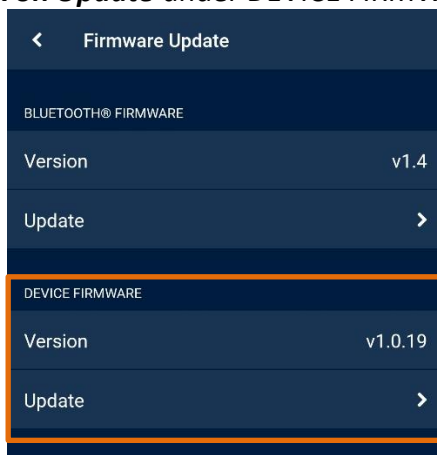
- **Connect** your device to the Hoffmann CT app by selecting it from the list of available devices. Please note that your device must be in **Bluetooth mode “App”** in order to be discoverable for the app.



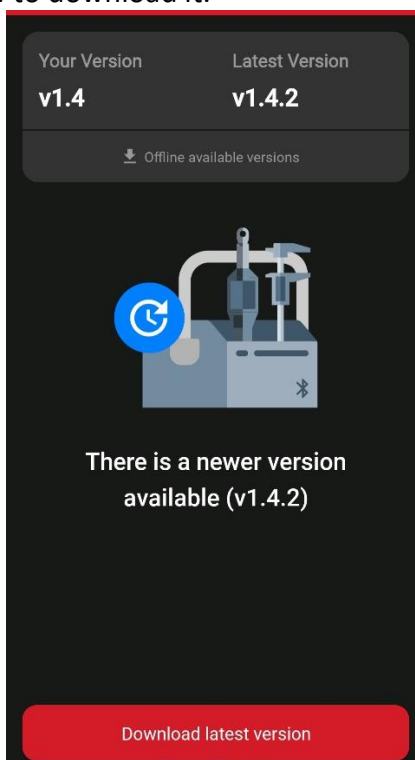
- Then go to the **settings** of your device in the Hoffmann CT app. At the bottom you will find **Firmware Update**.



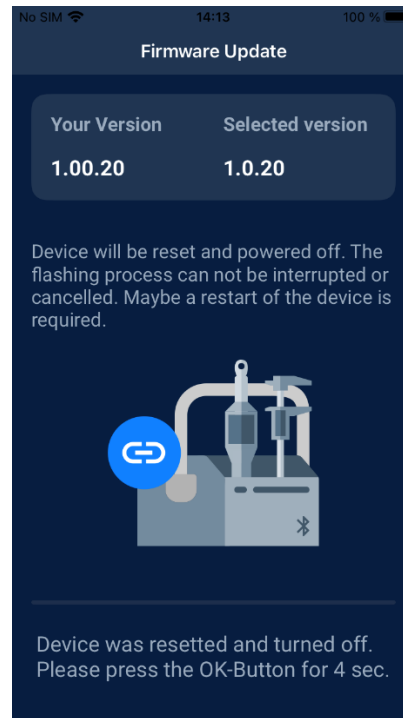
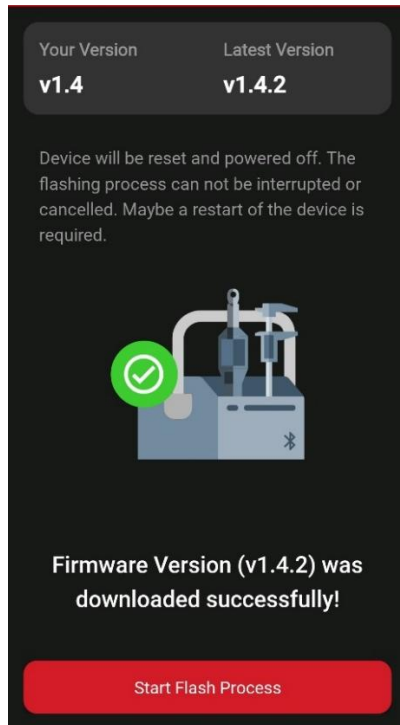
- Here you can choose whether you want to update the firmware of the device or the Bluetooth module. **Click on *Update*** under DEVICE FIRMWARE.



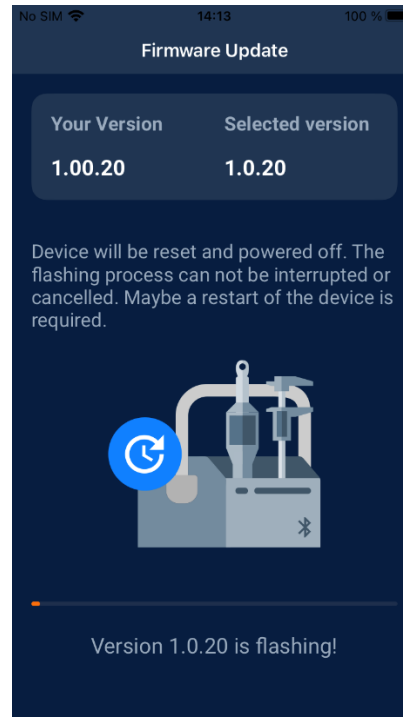
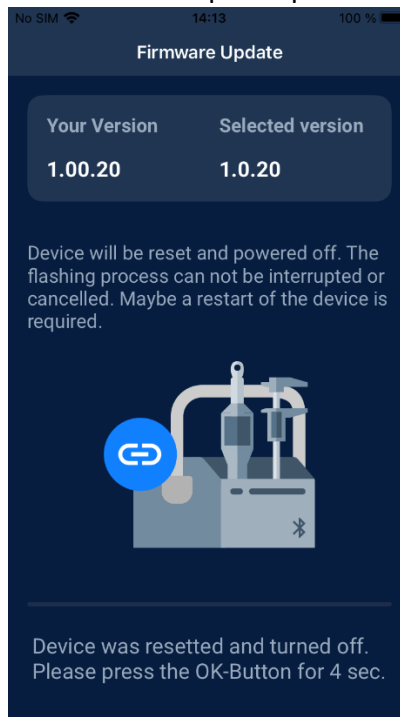
- **Click on *Search for firmware update*** to check which versions are available.
- You will now be shown whether a newer version is available. If this is the case, **click on *Download latest version*** to download it.



- Once the download is complete, **click on *Start Flash Process*** to load the firmware onto the device and **confirm** this again.



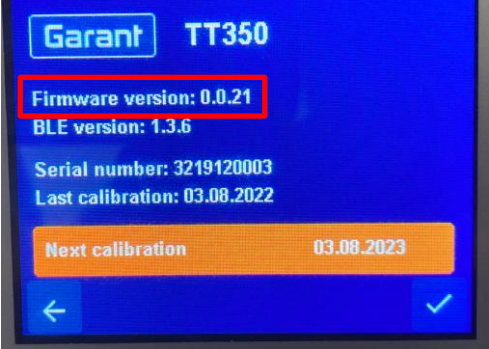
- Press and **hold** the **OK button** on your device **4s** until the connection to the device is established.
- The Flash process is now started. Once this has been successfully completed, **click *Complete*** to end the update process.



- Then **restart** the torque wrench.

- -To check the installed firmware version, open the menu → “Info” on the torque wrench or connect to the Hoffmann CT app and select the “Settings” tab.

Info menu -  
Garant Torque Tester HCT



Setting tab –  
HCT mobile App



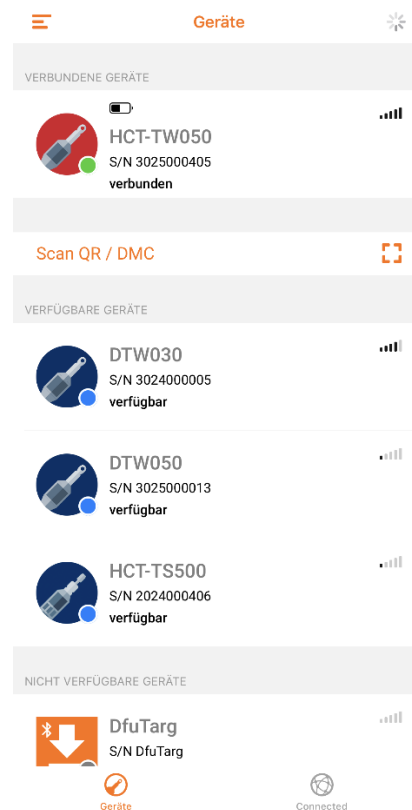
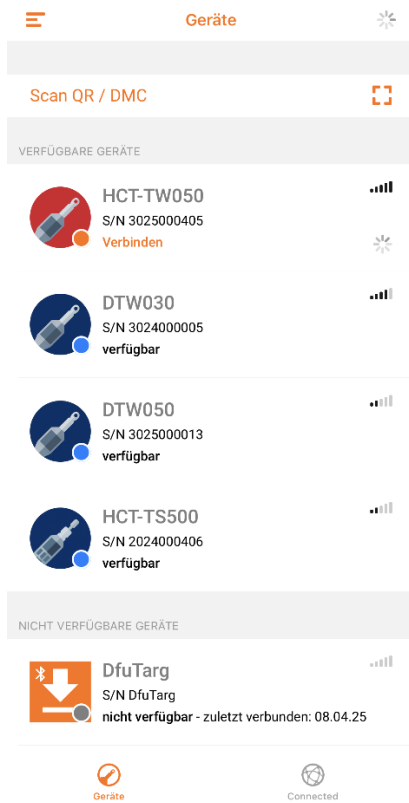
## 5.2 Bluetooth Module Update via the Hoffmann CT app

**Note:** If the Bluetooth connection or the update process is interrupted during the following steps, restart the TW and the Hoffmann CT app and repeat the process. If the TW can no longer be found, go to Chapter 6: Expert mode.

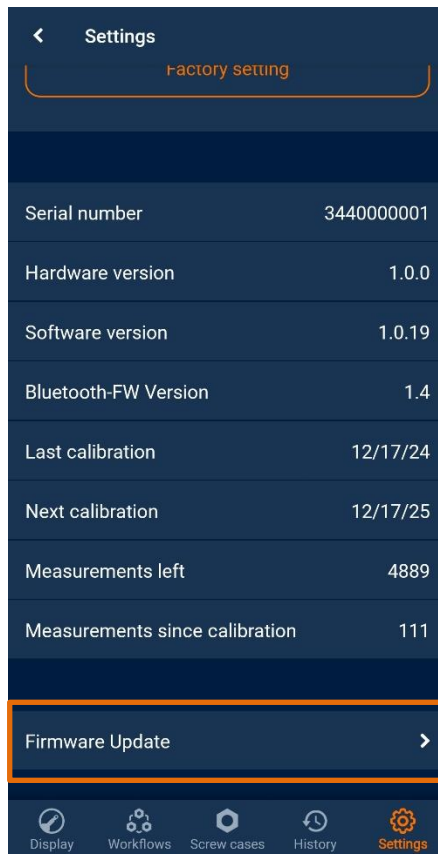
### Preconditions:

Hoffmann CT App Version 3.5.0 or higher is installed.

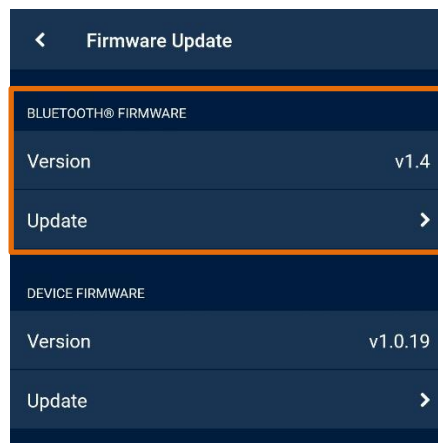
- **Connect** your device to the Hoffmann CT app by selecting it from the list of available devices. Please note that your device must be in **Bluetooth mode “App”** in order to be discoverable for the app.



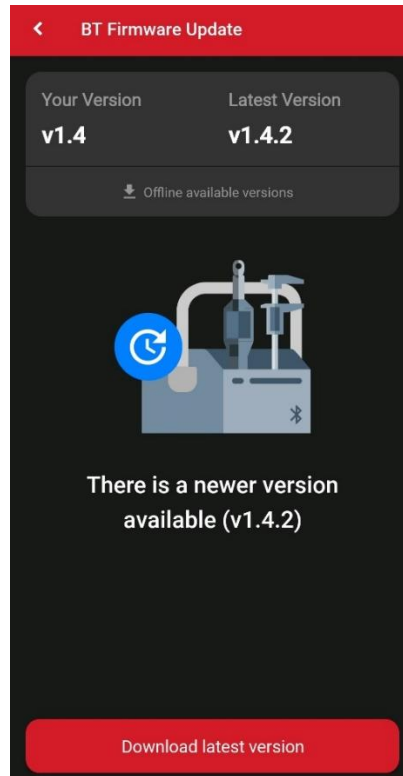
- Then go to the **settings** of your device in the mobile app. At the bottom you will find **Firmware Update**.



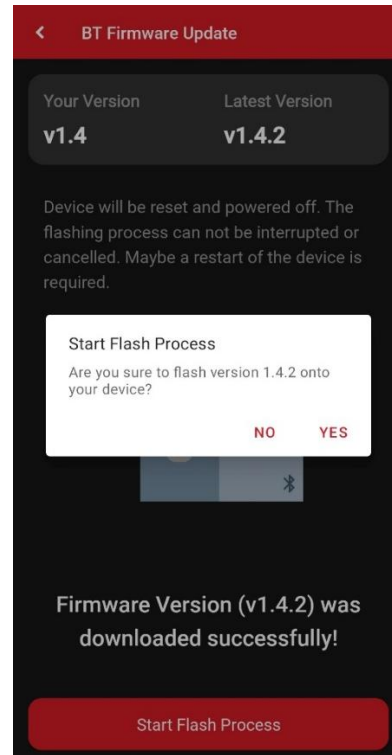
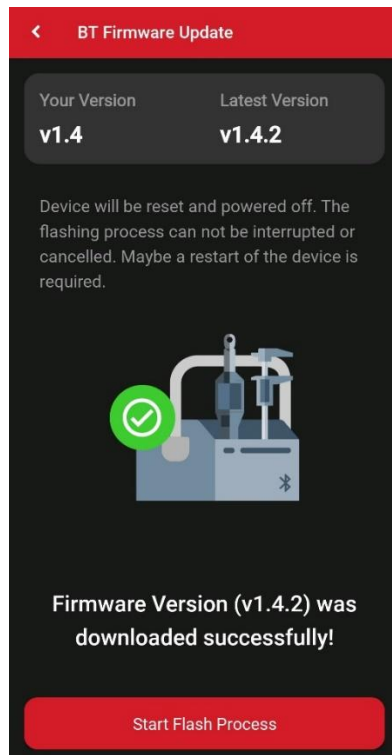
- Here you can choose whether you want to update the firmware of the device or the Bluetooth module. **Click on** the corresponding **Update**.



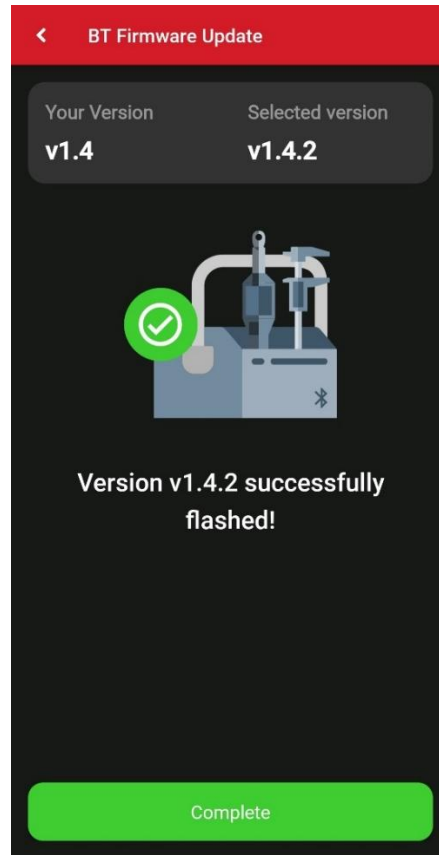
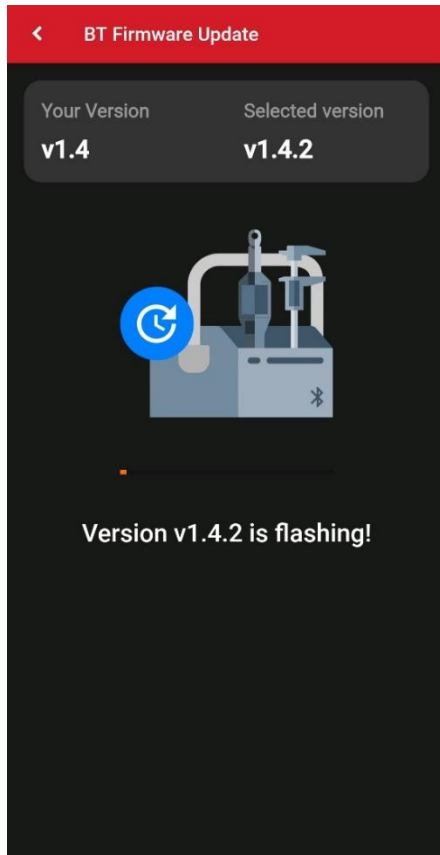
- You will now be shown whether a newer version is available. If this is the case, **click on *Download latest version*** to download it.



- Once the download is complete, **click on Start Flash Process** to load the firmware onto the device and **confirm** this again.

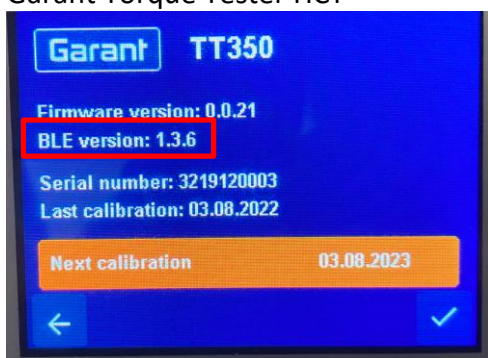


- The Flash process is now started. Once this has been successfully completed, **click Complete** to end the update process.



- Then **restart** the torque wrench.
- To check the installed Bluetooth firmware version, open the menu ☰“Info” on the torque wrench or establish a connection with the Hoffmann CT app and select the “Settings” tab.

Info menu -  
Garant Torque Tester HCT



Setting tab –  
HCT mobile App

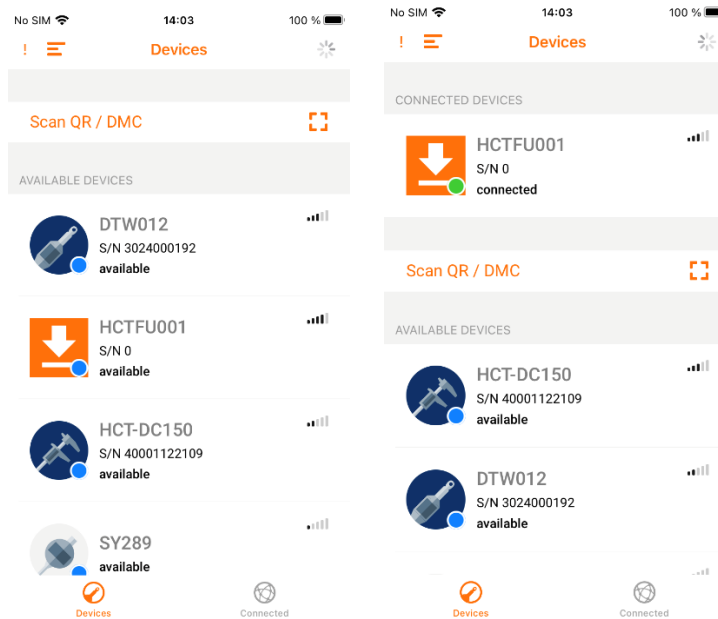


## 6 Expert mode - in case of failed updates

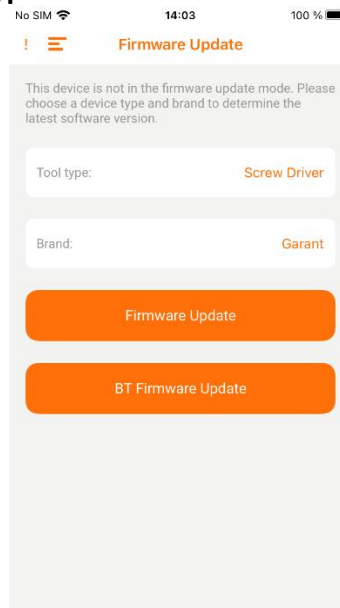
If the update via the Hoffmann CT app fails and you can no longer establish a connection to the device, proceed as follows:

### 6.1 Firmware Update

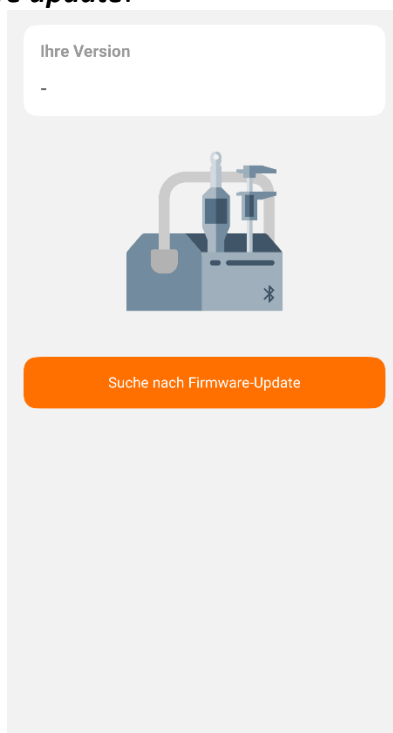
- Open the **Hoffmann CT app** again or wait until your device appears as **HCTFU001** in the app under available devices. Please note that it may take approx. 30 s for the device to be displayed.  
**Attention:** If DfuTarg appears first, ignore it and wait for HCTFU001!
- Now select HCTFU001 from the list of available devices to connect to the device.



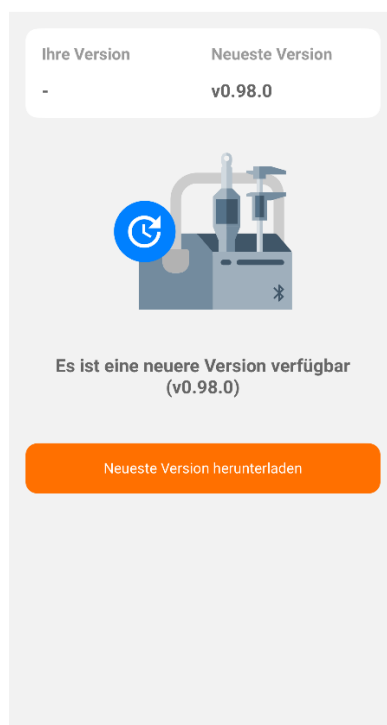
- Select the correct **device type** and **brand** and click on **Firmware Update**.



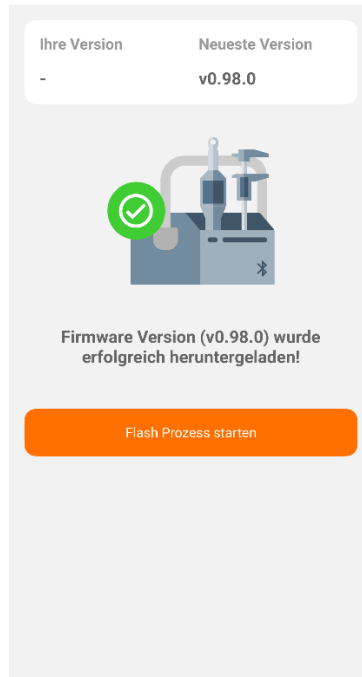
- Now click **Search for firmware update**.



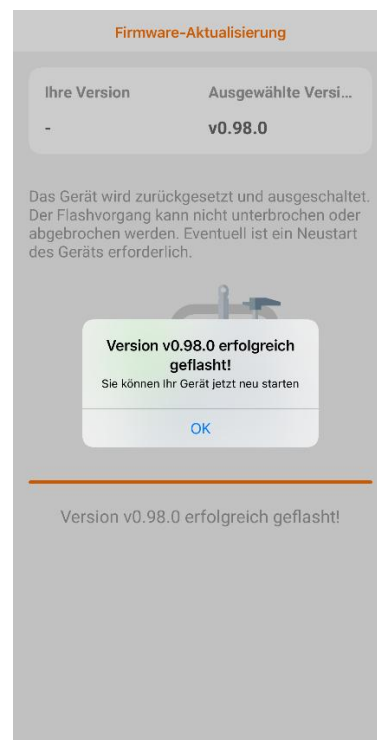
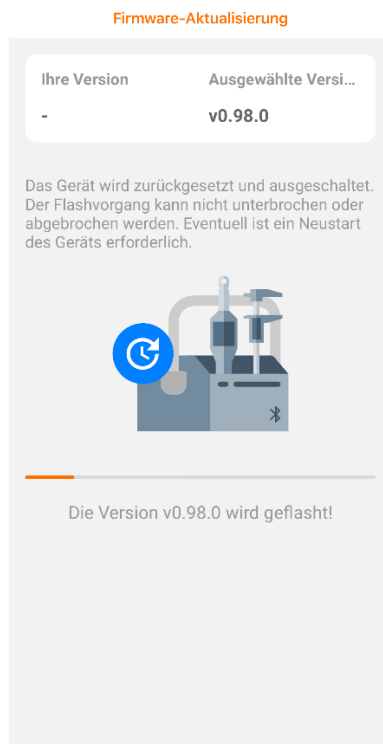
- You will be shown which version is available for download. Click on **Download latest version** so that you can then transfer it to the device.



- Click on **Start flash process** to load the firmware onto your device.



- Please note that the flash process may take a few minutes. Leave your device **switched on** and **do not close the app**. Then **restart** the device (after the version has been successfully flashed).



Firmware- & BLE Update  
Expert mode - in case of failed updates

**Hoffmann Supply Chain GmbH**

Poststraße 15

D-90471 Nürnberg

E-mail: [hct@hoffmann-group.com](mailto:hct@hoffmann-group.com)